



MANTARAY[®]

Water-Powered Tools

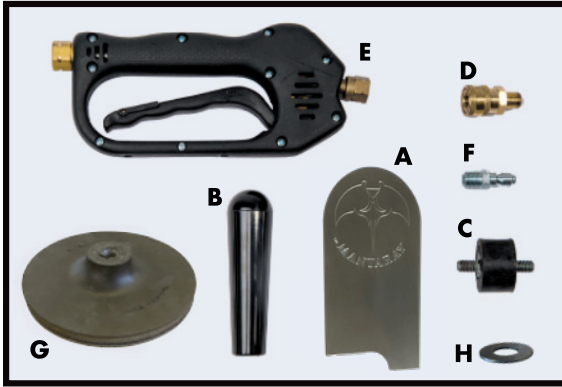
Polisher/Rougher



READ USER'S MANUAL BEFORE OPERATING

US Patent Pending, La Plata Industries, Inc.

Parts Included For Hand-Held Unit



A: MantaRay Housing

B: MantaRay Side Handle

C: Vibration Mount

D: 1/4" Female Fast Connector*

E: Trigger Handle

F: 1/4" Male Connector

G: 7" Hook and Loop Disc

H: Washer



Adjustable
Pressure Washer
Not Included

Connector Not Included

*For best results, use a 4,000 p.s.i. pressure washer with a minimum of 3.5 g.p.m.

*For use with the entire MantaRay line of tools, use an adjustable 2,500 p.s.i. to 4,000 p.s.i. pressure washer with a minimum 3.5 g.p.m

*The trigger handle fitting is not a universal fitting for all pressure washer hoses. It may require an attachment to fit your hose into the trigger handle.



ASSEMBLY INSTRUCTIONS

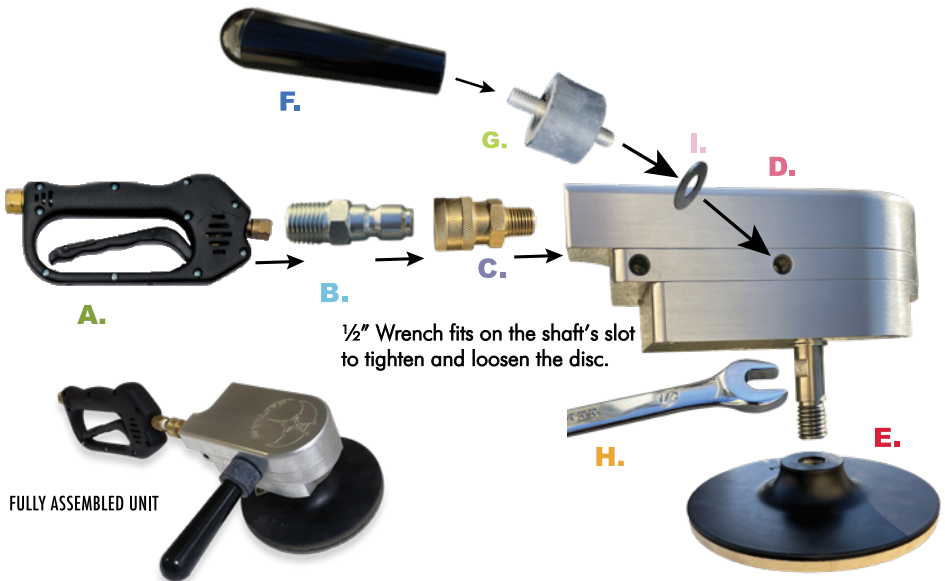
HAND-HELD UNIT

- A** Trigger Handle
- B** ¼" Male Connector
- C** ¼" Female Fast Connector
- D** MantaRay Housing
- E** Disc
- F** MantaRay Side Handle
- G** Vibration Mount
- H** ½" Wrench (Not Included)
- I** Washer

- Ensure all fittings are tightly secured.
- Using Teflon tape (not included) for use as a sealant on all threaded surfaces.
- Add marine grease to the shaft threads before securing the disc.
- Check to make sure there are no leaks prior to use.
- Check for loose particles or obstructions in and around the area of operation.
- Do not wear loose clothing.
- Keep hands and feet away from all moving parts.
- Wear eye and ear protection at all times.

Secure the appropriate hook and loop disc and grit pad for the project for which the MantaRay is used. Do not use adhesive discs or grit pads. The shaft is universal and will accommodate any hook and loop discs. Using the MantaRay as a hand-held tool can accommodate hook and loop discs between 3" and 7".

Ensure the MantaRay has come to a complete stop prior to removing any abrasives or discs. Handle the MantaRay with care and do not drop. **After every use, remove the disc and clean the disc threads and shaft threads. Failure to do so will void the manufacturer's warranty and/or service contract.**



* Side handle with vibration mount can be attached to either side of unit for left-handed or right-handed use.
Can be used with stand-up handle (sold separately)

MantaRay Water-Propelled Polisher/Rougher Standup Vacuum System

Includes MantaRay Water-Propelled Polishing Tool, MantaRay Polishing Vacuum Attachment, Standup Handle, and Optional IPC Eagle Professional Pump-Out Vacuum with a 20-Foot Vacuum Hose and Slurry Bag (Roughing Attachment Sold Separately).

*For Indoor or Outdoor Use



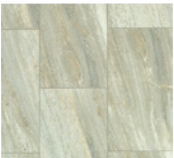
2,500 p.s.i. to 4,000 p.s.i.
Adjustable Pressure Washer Not Included



Optional IPC Eagle Professional
Pump-Out Vacuum

Use the MantaRay to polish or rough surfaces such as:

Limestone



Marble



Granite



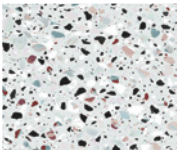
Porcelain



Glass



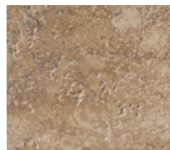
Terrazzo



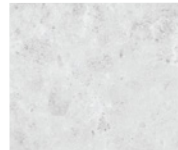
Onyx



Travertine



Concrete

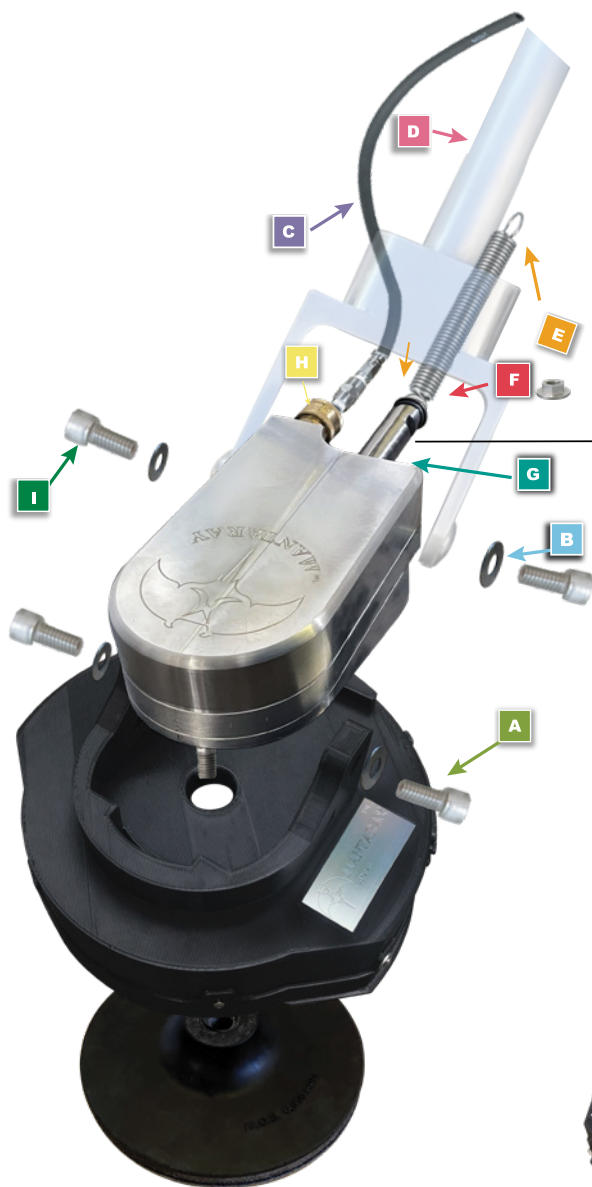




MantaRay Standup Vacuum System

Parts Included With Indoor Vacuum System

- A** 3/8 16 3/4 Bolt (x2)
- B** Washers (x4)
- C** Standup Handle Pressure Hose
- D** Standup Handle
- E** Tail Spring
- F** 1/2" Nut
- G** Tail Shaft
- H** 1/4" Female Fast Connector (Requires Teflon tape prior to connection).
- I** 3/8x16 1inch Bolt



Use 1/2" wrench to tighten the tail shaft





ASSEMBLY INSTRUCTIONS

MANTARAY STANDUP VACUUM SYSTEM

To attach the MantaRay Housing to the MantaRay Vacuum Attachment:

1. Place shaft of MantaRay Housing into top hole of the MantaRay Vacuum Attachment. Press the MantaRay Housing down so it is flush with the MantaRay Vacuum Attachment. It will sit secure in the attachment.
2. Secure the MantaRay Housing to the MantaRay Vacuum Attachment by using the washers (Part B) (x2) and 3/8x16 bolts (Part A) (x2). Tightly secure the bolts into the top side holes in the MantaRay Vacuum Attachment. The bolt holes in the MantaRay Housing line up with the bolt holes in the MantaRay Vacuum Attachment.
3. Secure the Standup Handle (Part D) to the rear holes on each side of the MantaRay Housing by using the washers (Part B) (x2), 3/8x16 bolts (Part A) (x2), and plastic spacers (Part I) (x2).
4. Using Teflon tape (not included) on the threads of the 1/4" Female Fast Connector (Part H), screw Part H into the hole on the top right-hand side of the rear of the MantaRay Housing. Insert the Standup Handle Pressure Hose (Part C) into the 1/4" Female Fast Connector.
5. Screw in the Tail (Part G) into the hole in the center of the rear of the MantaRay Housing. Use a 1/2" wrench (not included) to tighten shaft or loosen.
6. Connect the Tail Spring (Part E) to the Tail Shaft (Part G) and secure with the 1/2" nut (Part F). Tighten Part F with a 1/2" wrench (not included).
7. Attach the disc by holding the MantaRay Housing shaft with 1/2" wrench (not included) through the adjustable airflow adjusting door on the side of the MantaRay Vacuum Attachment. Then tighten the disc onto the MantaRay Housing shaft.
8. Once the disc is securely in place, close the adjustable airflow door and gently turn to the knob on the airflow door to secure it in place. Do not overtighten.



1. Attach the vacuum hose to the vacuum port on the polishing attachment or roughing attachment (sold separately).



2. The MantaRay Polishing Vacuum Attachment has an adjustable door to control the airflow to the unit. When using the MantaRay Polishing Vacuum Attachment with the optional IPC Eagle Professional Pump-Out Vacuum, the adjustable door should be secured in the closed position. To secure, gently turn the knob on the adjustable door to tighten. Do not overtighten this knob.

If not using the Optional IPC Eagle Professional Pump-Out Vacuum and more airflow is required, gently turn the knob on the adjustable door to adjust the door to allow the proper amount of airflow and then gently tighten the knob to secure the adjustable door. Do not overtighten this knob.

Only a 7" hook and loop pad should be attached to the disc when using the MantaRay Standup Handle.

If the MantaRay is not moving freely across the floor, the airflow should be increased and the adjustable airflow door should be opened more. If water is flowing from underneath the MantaRay Vacuum Attachment, the airflow should be decreased and the adjustable airflow door should be opened less.

- 3.** Secure the vacuum hose clamp to the MantaRay Standup Handle by inserting the 10/32 x 1-1/2" Phillips screw through the bottom hole on the front plate of the MantaRay Standup Handle and tightening the screw with a screwdriver.



- 4.** Next, insert the vacuum hose into the opening of the vacuum hose clamp to secure the hose.

- 5.** Then, insert the 2" connector and vacuum hose to the IPC Eagle 290-AD Professional Pump-Out Vacuum.



6. Before attaching the pressure washer hose to the MantaRay Standup Handle, allow the water to flow from the pressure washer hose to remove any sediment, dirt, or debris from the hose. Failure to do so will void the manufacturer's warranty and/or service contract.



Attach pressure washer hose to fitting (not included). Apply Teflon tape to the fitting and then attach fitting and hose to 90-degree adapter on stand-up handle.

Attach pressure washer hose to a 90-degree fitting (not included). Apply Teflon tape (not included) to the fitting and then attach the fitting and hose to the 90-degree fitting on the MantaRay Standup Handle. Read the user manual of the IPC Eagle 290-AD Professional Pump-Out Vacuum or other vacuum used to ensure proper usage. Ensure the power cord and the pump-out cords are plugged in properly. When using the MantaRay Standup Handle with the IPC Eagle 290-AD, use both motors on the IPC Eagle 290-AD Professional Pump-Out Vacuum.

The IPC Eagle 290-AD Professional Pump-Out Vacuum Manual can be obtained at mantaray.com or by scanning this QR Code below with your smart phone:





MANTARAY POLISHING VACUUM ATTACHMENT

The MantaRay Polishing Vacuum Attachment has an adjustable door to control the airflow to the unit. When using the MantaRay Polishing Vacuum Attachment with the optional IPC Eagle Professional Pump-Out Vacuum, the adjustable door should be secured in the closed position. To secure, gently turn the knob on the adjustable door to tighten. Do not overtighten this knob.

If not using the Optional IPC Eagle Professional Pump-Out Vacuum and more airflow is required, use the 5M Hex Key to loosen the screw above the center of the adjustable door and adjust the door to the proper amount of airflow and then tighten the screw to secure the adjustable door.

If the MantaRay is not moving freely across the floor, the airflow should be increased and the adjustable airflow door should be opened more. If water is flowing from underneath the MantaRay Vacuum Attachment, the airflow should be decreased and the adjustable airflow door should be opened less.



The MantaRay Polishing Vacuum Attachment skirt should be flush with the flooring surface. After the disc has been installed on the MantaRay, close the adjustable airflow door and secure by gently tightening the knob. Place the MantaRay Polishing Vacuum Attachment skirt flush with the project surface. Using a 5M Hex Key (included), loosen the skirt screws around the bottom of the MantaRay Polishing Vacuum Attachment. Adjust the skirt to be slightly above the project surface in order to allow airflow to circulate. Do not adjust the skirt more than 1/8" of an inch above the project surface.



After the MantaRay Polishing Vacuum Attachment is adjusted to the appropriate height, tighten the screws to secure the skirt of the MantaRay Polishing Vacuum Attachment. If not using the Optional IPC Eagle Professional Pump-Out Vacuum and more airflow is required, gently turn the knob on the adjustable door to adjust the door to allow the proper amount of airflow and then gently tighten the knob to secure the adjustable door. Do not overtighten this knob.



MANTARAY ROUGHING VACUUM ATTACHMENT

The MantaRay Roughing Vacuum Attachment has an adjustable door to control the airflow to the unit. When using the MantaRay Roughing Vacuum Attachment with the optional IPC Eagle Professional Pump-Out Vacuum, the adjustable door should be secured in the closed position. To secure, gently turn the knob on the adjustable door to tighten. Do not overtighten this knob.

If not using the Optional IPC Eagle Professional Pump-Out Vacuum and more airflow is required, gently turn the knob on the adjustable door to adjust the door to allow the proper amount of airflow and then gently tighten the knob to secure the adjustable door. Do not overtighten this knob.



If the MantaRay is not moving freely across the floor, the airflow should be increased and the adjustable airflow door should be opened more. If water is flowing from underneath the MantaRay Vacuum Attachment, the airflow should be decreased and the adjustable airflow door should be opened less.

The MantaRay Roughing Vacuum Attachment skirt should be flush with the flooring surface. After the disc has been installed on the MantaRay, close the adjustable airflow door and secure by gently tightening the knob. Place the MantaRay Roughing Vacuum Attachment skirt flush with the project surface. Using a 5M Hex Key (included), loosen the skirt screws around the bottom of the MantaRay Roughing Vacuum Attachment. Adjust the skirt to be slightly above the project surface in order to allow airflow to circulate. Do not adjust the skirt more than 1/8" of an inch above the project surface.



After the MantaRay Roughing Vacuum Attachment is adjusted to the appropriate height, tighten the screws to secure the skirt of the MantaRay Roughing Vacuum Attachment. If not using the Optional IPC Eagle Professional Pump-Out Vacuum and more airflow is required, gently turn the knob on the adjustable door to adjust the door to allow the proper amount of airflow and then gently tighten the knob to secure the adjustable door. Do not overtighten this knob.

Warranties and Repairs

The MantaRay is proudly manufactured by La Plata Industries, Inc. in South Florida and is warranted against defects in materials or workmanship under the intended use of the MantaRay. All MantaRay Water-Propelled Tools come with a 1 year manufacturer's warranty for manufacturing and material defects. La Plata Industries, Inc. is not responsible for personal or property damage or product damage caused by misuse, operator negligence, dropping of the MantaRay, or use in any manner not intended.

An optional 2-year service contract is available through La Plata Industries, Inc., manufacturer of the MantaRay. For information on the optional service contract, contact your La Plata Industries, Inc. sales representative at (954) 464-7570 or return the enclosed card with your payment to
La Plata Industries, Inc.

Thank you for your purchase.



MADE IN THE USA

Copyright 2022 La Plata Industries Inc.



4848 NE 11th Avenue
Oakland Park, FL 33334
www.MantaRayTools.com

www.MantaRayTools.com